

HOLLY 188



VICTURNKEYHOMES

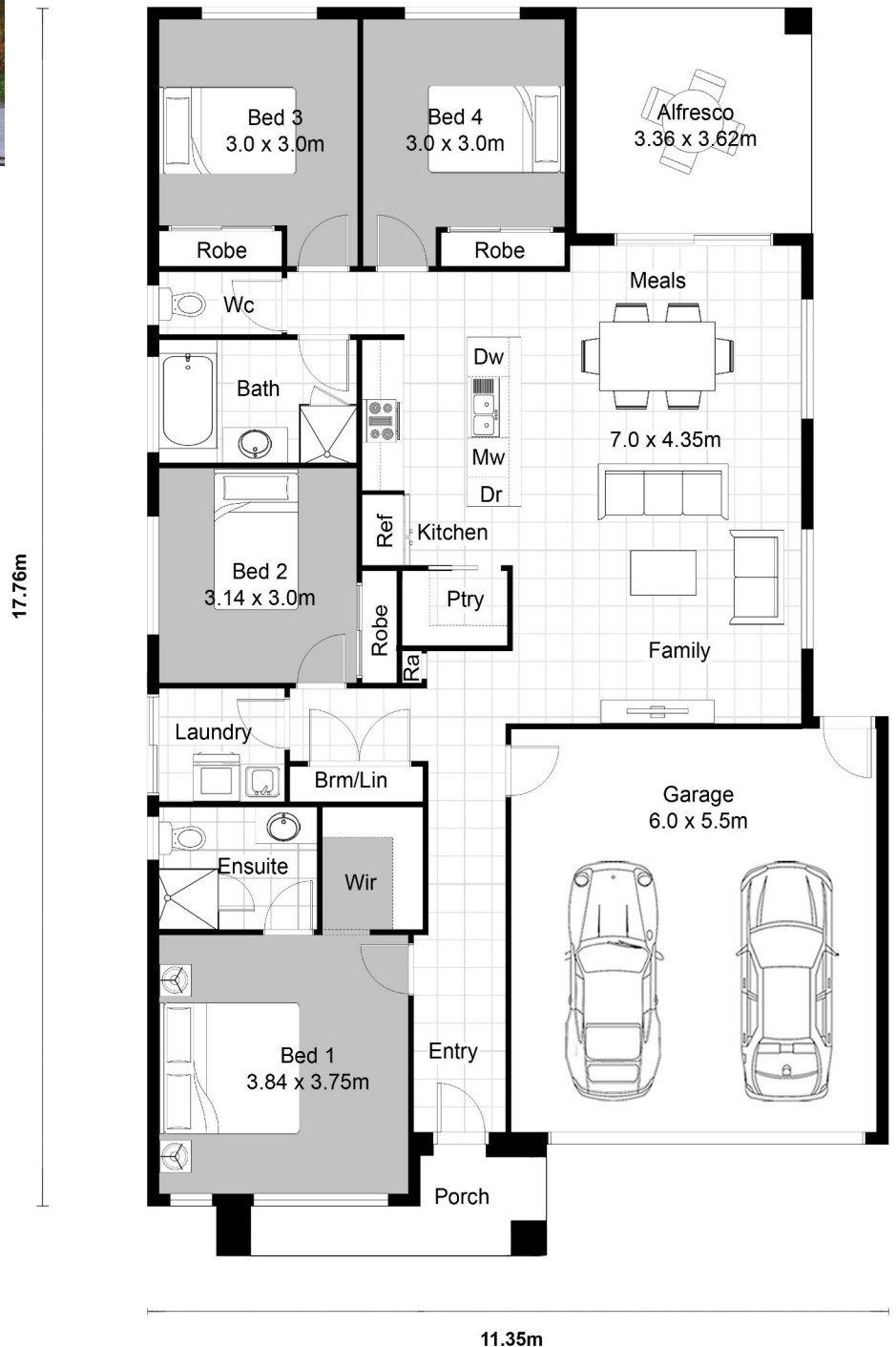


FEATURES

- 4 spacious bedrooms
- 2 bathrooms
- Generous kitchen
- Walk in pantry
- Open plan living
- Broom / Linen cupboard
- Double lock up garage
- Undercover Alfresco

Designed to fit a 12.5 x 25m block of land

House area:	188.11m ² (20.24sq)
Residence:	135.38m ² (14.56sq)
Porch:	4.53m ² (0.49sq)
Alfresco:	12.16m ² (1.31sq)
Garage:	36.04m ² (3.88sq)



VICTURNKEYHOMES.COM.AU