

CAMBRIDGE 261



VICTURNKEYHOMES



FEATURES

- 4 spacious bedrooms
- 2 bathrooms
- Large kitchen with large walk in pantry
- Undercover Alfresco
- Loads of storage options
- Theatre + Living (3 living areas)
- Double vanity to ensuite
- Double lock up garage

Designed for 15 x 30m

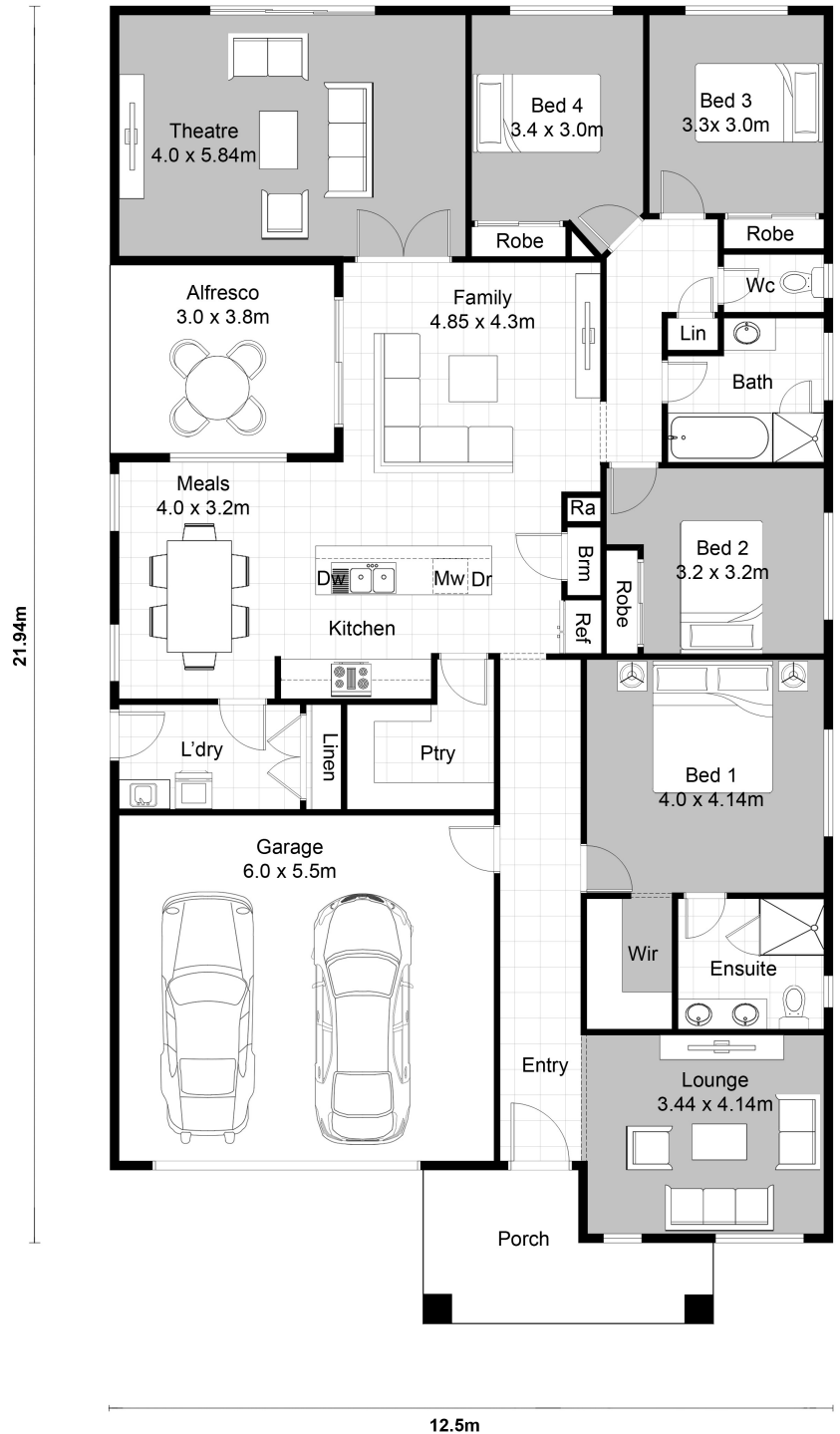
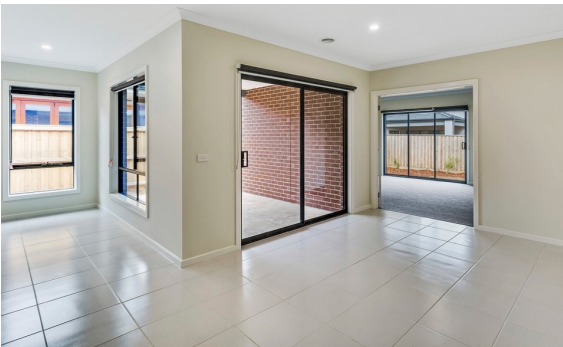
Total area: 260.82m² (28.04sq)

Residence: 203.27m² (21.86sq)

Porch: 5.41m² (0.58sq)

Alfresco: 11.4m² (1.22sq)

Garage: 40.74m² (4.38sq)



VICTURNKEYHOMES.COM.AU

Images are used for illustrative purposes only. All plans and facades are indicative concepts and are not intended to be an actual depiction of the building. Fencing, paths, driveway and landscaping are not necessarily to scale. Images of some items may be an upgrade. All dimensions and sizes are approximate, and can vary with different facades, and also due to building code, regulations, and Developer Design Guidelines. Refer to contract documentation for details. Working drawings take precedence over this brochure. Always refer to endorsed/council approved plans. Siting and position of garage are for illustration purposes only and may change subject to approval by relevant authorities. House design can be mirror imaged to suit a crossover being on the opposite side to illustration. Contact Vic Turnkey Homes for full details. The builder reserves the right to amend specifications and price without notice. This floorplan is for the exclusive use of Vic Turnkey Homes Pty Ltd.