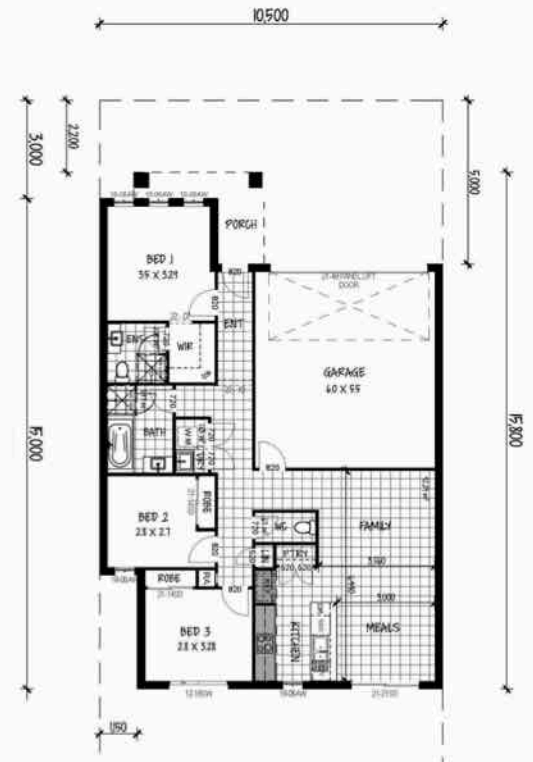
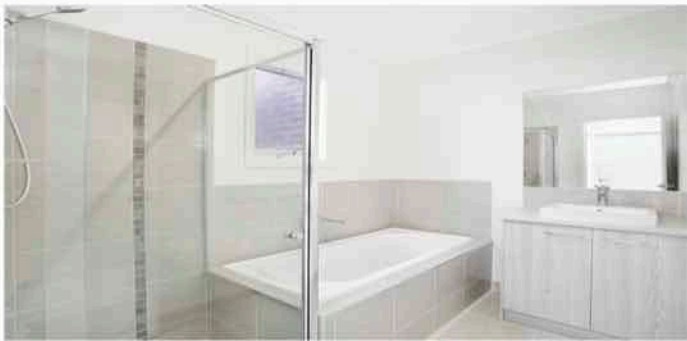


# MAIDSTONE 146



Designed for 10.5m x 21m land (Conditions Apply), this clever design comes with:

- 3 bedrooms
- Ensuite, bathroom, separate toilet
- Double Lock-up Garage
- Space saving Euro Style Laundry
- Great Galley style kitchen with overhead cupboards and double pantry



3 Bedrooms  
Bathroom  
Ensuite  
Double Garage

MAIDSTONE 146

© Copyright

## SUMMARY OF AREAS

AREA	sqm	m <sup>2</sup>
RESIDENCE	118	103.98
PORCH	0.65	6.04
ALFRESCO	0.00	0.00
GARAGE	3.84	35.76
TOTAL AREA	122.49	105.78

Designed for 10.5m x 21m  
Small Lot Housing Code.  
East and West Facing

VICTURNKEYHOMES.COM.AU

Images are used for illustrative purposes only. All plans and facades are indicative concepts and are not intended to be an actual depiction of the building. Fencing, paths, driveway and landscaping are not necessarily to scale. Images of some items may be an upgrade. All dimensions and sizes are approximate, and can vary with different facades, and also due to building code, regulations, and Developer Design Guidelines. Refer to contract documentation for details. Working drawings take precedence over this brochure. Always refer to endorsed/council approved plans. Siting and position of garage are for illustration purposes only and may change subject to approval by relevant authorities. House design can be mirror imaged to suit a crossover being on the opposite side to illustration. Contact VicTurnkey Homes for full details. The builder reserves the right to amend specifications and price without notice. This floorplan is for the exclusive use of Vic Turnkey Homes Pty Ltd.